

NKS Tech X-Loupe™ - the new microscope revolution



**taking microscopy and reporting
out of the laboratory....**

X-Loupe™ – creates precise, fast and traceable documentation in the field....

X-Loupe is a digital, portable field microscope that consists of 3 parts: A modified Canon IXUS camera, a battery module and 3 interchangeable lenses.

By attaching the X-Loupe battery module and a lens to the camera it transforms into a microscope.



The lenses incorporate an adjustable LED light.

This feature solves the most challenging illumination problems when taking micro photography.

The X-Loupe is completely independent of all exterior light sources and can be used in any light conditions.

Per Alfsen, Product & Productivity Manager at Sandvik Coromant says:

"I use X-Loupe on location to attain a mutual understanding with our customers of how our cutting tools are performing. Here the customer and I can study the cutting tools edge together on the X-Loupe display. Normal issues with lighting are resolved by X-Loupe's built-in adjustable illumination. By being able to take microscopic images on site, we save time by not having to bring the tool back to the microscope in the office".

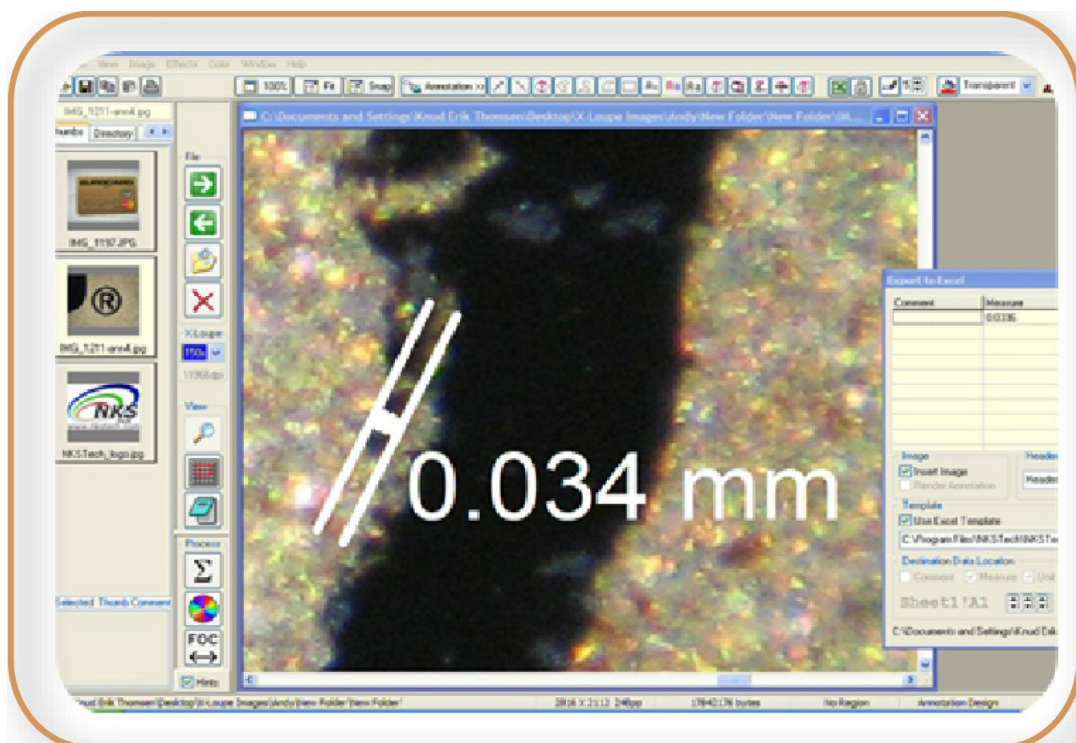
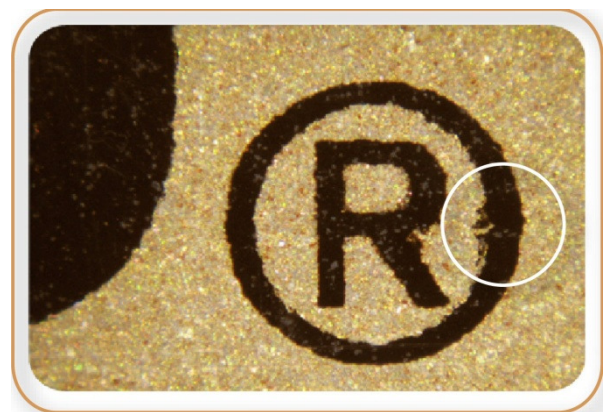
Steen Demant, Quality Engineer at LEGO Company says:

"I take images of the mounting of SMD components on circuit boards, however I see a lot of opportunities for taking images of mechanical parts and moulds. The advantage is the fast communication. An image says more than 1000 words; we in turn avoid sending an employee half-way around the world, This adds a value when we design in one part of the world and test in another".

The X-Loupe captures images of objects in the range from 15 mm to 0,005 mm, making it possible to identify microscopic details that need attention, and via the NKS Tech X-Loupe Image Management software making them available world wide within minutes. The NKS Tech X-Loupe Image Management software makes it possible to transmit high definition images where observations, comments as well as measurements are included within the image. The image can then be sent as a jpeg file, or as a detailed Excel spreadsheet that is easily generated.

Benefits

Breach the distance of communication, eliminate misconceptions, minimize the need for shipping samples along with travel expenses and provide an all round higher level of communication with X-Loupe.



NKS Tech X-Loupe™ specifications



Microscope Camera:

FOV (Field of View):

60X: FOV is 14.1 mm x 10.6 mm; 4.6 $\mu\text{m}/\text{pixel}$

100X: FOV is 7.5 mm x 5.6 mm; 2.4 $\mu\text{m}/\text{pixel}$

150X: FOV is 5.1 mm x 3.8 mm; 1.7 $\mu\text{m}/\text{pixel}$

Camera settings for above data:

* Zoom: 3.0 optical zoom and no digital zoom

* Recording Pixels: L (Large) 3072 x 2304 pixels (7.1 MegaPixels)

Integrated White Light LED illumination

Weight Less than 250g (incl. lens)

Dimensions 95x58x81mm (incl. 60X lens)

Dimensions 95x58x63mm (incl. 150X lens)



G20-300X

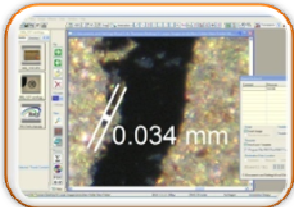
- FOV is 2.2 mm x 1.6 mm; 0,7 $\mu\text{m}/\text{pixel}$
3264 x 2448 pixels (8.0 MegaPixels)



Software

- Annotation: Measurements, lengths, angles, areas, comments etc. within the image.
- Extended Focus feature.
- Colour, brightness, contrast adjustment etc.
- Excel spreadsheet reporting including image, measurements and traceability data like date and time image taken etc.

Further specifications of products and accessories are available on the internet.



Your reseller:



NKS Tech ApS
Helmsvej 1
DK-8600 Silkeborg
Denmark

Phone: (+45) 86 80 37 34
Fax: (+45) 86 08 37 35
E-mail: info@nkstech.com
Web: www.nkstech.com