

Computer Setup

NKS Tech recommend using the "NKSTech X-Loupe software". This software is downloaded from www.nkstech.com/software.

When using the **NKSTech X-Loupe software** we do **NOT** recommend installing the Canon software from the CD's in the camera box. Instead we recommend using the following Microsoft Windows setup to automatically transfer the images from the camera to the computer.

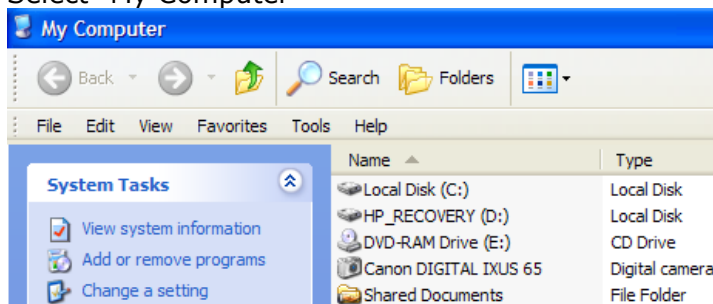
Automatic transfer setup:

1. On the Camera:

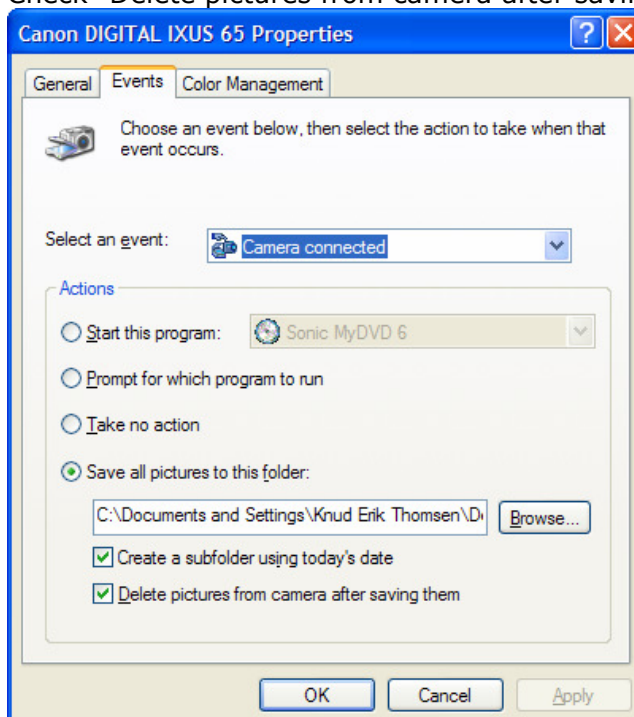
- a. Connect the camera and the computer via the USB cable.
- b. Turn on the camera
- c. Set the camera to "Playback Mode" (Play)

2. On the Computer:

- a. Select "My Computer"



- b.
- c. Right-click "Canon DIGITAL IXUS ??"
- d. Select "Properties"
- e. Select "Events"
- f. Select "Save all pictures to this folder"
- g. Select the folder where you automatically want to save your images every time the camera is connected to the computer
- h. Check "Create a subfolder using today's date"
- i. Check "Delete pictures from camera after saving them"



j.